



Purple Martin Landlords of North Texas



"Spreading the Word About this Wonderful Bird"

PMLNT Texas (and others) Roost Locations

This article represents over three years of compiling roost information.

It first appeared at [Wings In Flight](#) and is used here with their permission.



**Pre-Migratory Roost
Lewisville, TX 2004
[Click for larger view](#)**

Roosts can shift locations from year to year in many places. They normally begin staging at the beginning of July through the second week or so of August, a period of approximately 6 weeks. They will then fly to staging areas nearer the gulf before making their final flight to Brazil.

Here are several roosts in Texas that have been known since the year 2003 and numbers for 2005 are now being updated. Numbers are approximate and birds can shift locations several times before settling in one spot. Some years they may not return to the previous years site but a few of those places are still listed for those who wish

to check the area out. If you know of any other roost locations you'd like to share on this page, or can update any of the numbers for the locations shown here, please [Email](#) them with the address & approximate numbers. (Titled "Martin Roosts 2005) Thanks :-)

#

Dallas/Fort Worth Area

[Purple Martin Roost in Lewisville, TX](#) - by duhons.net
[Lewisville Roost map and video](#) - by Diverdan.

From I-35E in Lewisville, TX take Main Street Exit (FM 1171 west). On Main St. go about 1 mile to Old Orchard Lane and turn right (North). They have relocated to their former site on North Old Orchard Lane in the trees along the ditch north of the Remington Apartments (401 North Old Orchard), about 2 blocks north of Main St. They are located about 1/8 mile along the sidewalk just north of the trees, although they are scattered along the length of them. They arrive around 8:15pm and are all settled in the trees just before 9:00pm.

Parking - The best place suggested for this years parking and viewing is at the Post Office. The post office is located on Civic Circle, north of Main street, one block east of Old Orchard Lane.

2003 - 50,000
2004 - 40,000 to 45,000

2005 - Martins at this roost had all left on August 14th '05. It reached numbers of approximately 50,000.

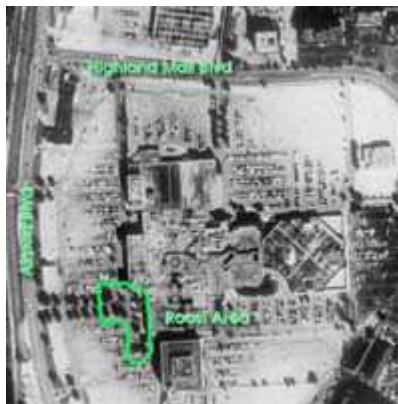
#

SW Fort Worth

Martins continue to roost in a couple of small trees at the Kroger shopping center on Hulen St. near where it intersects Granbury. (driveway goes in past Wolf Camera).

2005 - Approx. 1,000 birds.

Austin Area



CLICK IMAGE FOR LARGER VIEW

Above: Highland Mall Roost - 7/19/04
Photos: ©1998-2004, Andrew Balinsky - [Andy & Julias Gallery](#)

#

Highland Mall off of Airport Blvd

Hwy-290E / IH-35. Oak trees between Dillard's and Foleys on the south east side of the Mall.
Birds seen from 8pm, numbers peaking at approximately 8:45pm
Approx. number in 2003 - 7,000-10,000

2004 - Approx. 10,000.
2005 - Roost is active.

#

College Station

Texas A&M West Campus

Mainly the west campus parking lots near the recreation center.
Specifically, south of University Drive, on Wellborn Road across from Kyle Field.
Previous years - 300,000
2005 - ?

#

Houston Area

Spring Branch

The fields and bayou at 2800 Rosefield,
two streets east of Gessner on Kempwood. (topo-450j)
Approx. number in 2003 - 40,000.
2004 - None reported.
2005 - ?

#

Sharpstown Mall

Hwy-59 & Bellaire Blvd. Live Oak trees in the parking lot on the South side of the mall.
2005 - Active

Lake Livingston

Hwy. 190 Bridge that crosses Lake Livingston
Approx. Number in 2003 - 100,000.
2004 - ?
2005 - ?

#

Corpus Christi Area

The Summit Apartments

5502 Saratoga Blvd. Across the street from Jason's Deli.
The apartments are located on the corner of Staples Street
and Saratoga Blvd.
Birds are in by 8:45PM.

2005 (first year at this site) - Approx 10,000.

#

Tyler Area

Off of the Troup Highway(110) just north of the 323 loop. Alberson's Parking Lot
2004 - Several Thousand. (8:20-8:45pm)
2005 - ?

#

Louisiana

Shreveport

Christus Schumpert Medical Center
Approx. number in 2003 - 100,000+

[Lake Ponchartrain Causeway](#)
Approx. number in 2003 - 200,000+

#

North Carolina

Mann's Harbour, NC, Purple Martin Roost Project.
purplemartinroost.com Joining together to protect the Manns Harbor PM Roost.

More details on most of the above sites can be found here

[PMCA Purple Martin Roost Sites](#)

#

